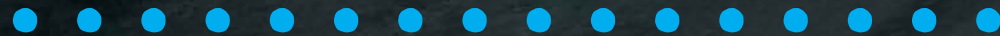




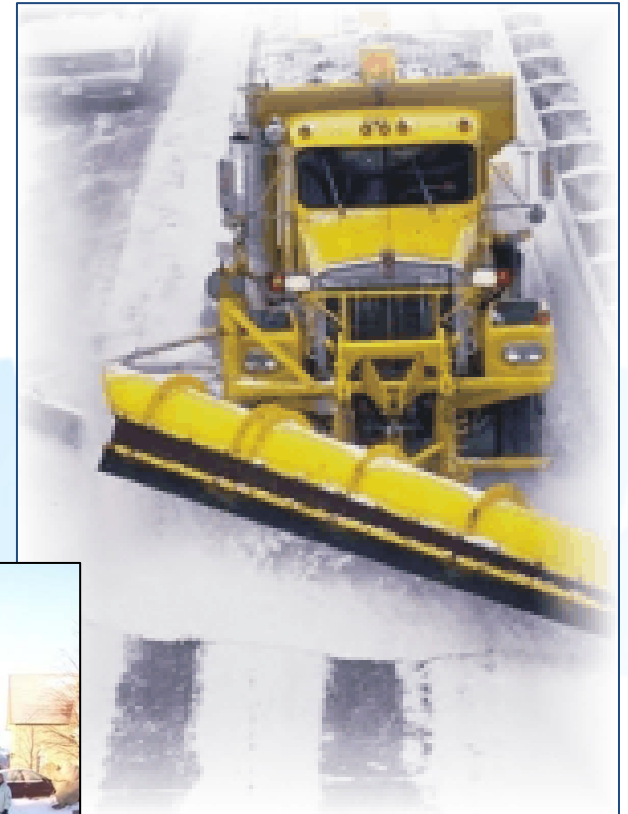
# Thawrox<sup>®</sup>



***Making the Most of Your Deicing Resources Just Got Easier***

# We Know Your Winter Challenges

- Keeping roads safe
- Environmental stewardship
- Limited financial resources
- Limited human resources



...And We Have the Solution



**Thawrox**<sup>®</sup>



# What is Thawrox®?

- Basic rock salt, encapsulated with a high-performance liquid
- A deicer with increased performance and environmental friendliness



# A Word About Liquid Enhancers

- Beware of imitators
- Thawrox is an all-natural, corn-based product
  - The only product that is lab and field tested for performance
  - The only product engineered for consistency
- Thawrox is not plain, dyed salt



# What Does Thawrox Provide?

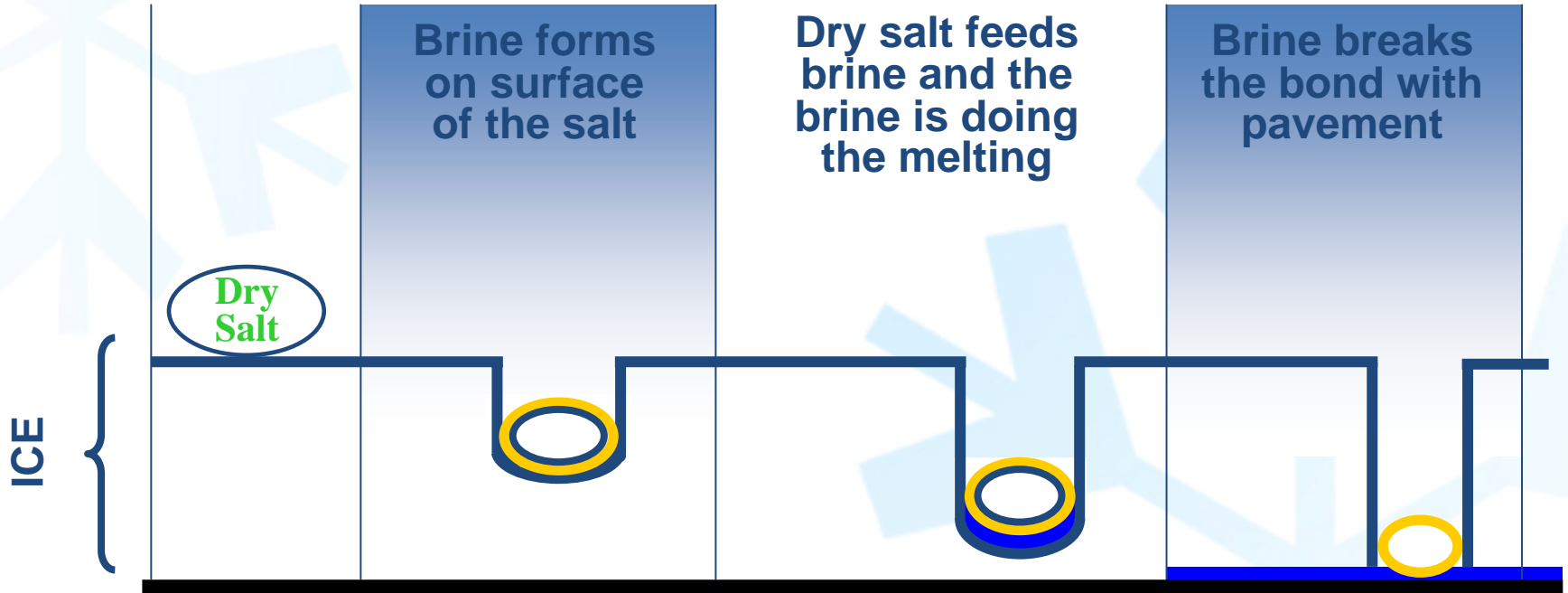
- Enhanced low-temperature performance
- Expanded melting capacity
- More friendly to the environment
- No stockpile clumping and free-flowing product in the most challenging weather conditions
- Reduced corrosiveness on equipment
- No leaching
- Minimized bounce, scatter and blow-off
- A pre-treated product that requires no mixing
- Maximized budget resources

# Enhanced Low-Temperature Performance

- Reduce salt usage from 25-50%
- Use less product and fewer trips
- Better residual melting activity
- Reduced product, labour and equipment costs
- Do more with less

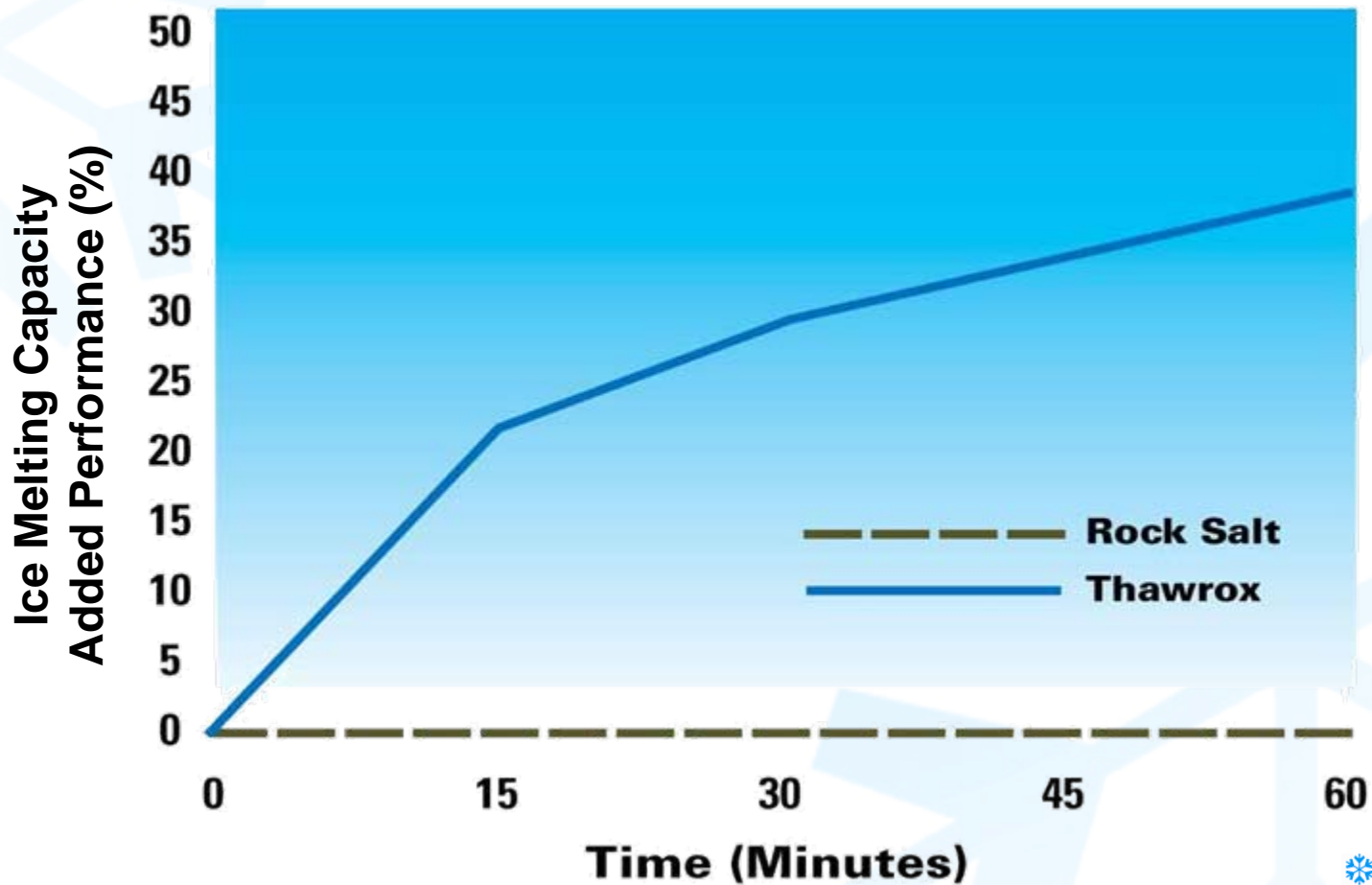


# Faster Melting Action at Low Temperatures



# Expanded Melting Capacity

Melting Capacity of Thawrox at 5° F



# More Friendly to the Environment

- Natural, environmentally friendly additives
- Will not leach or discolor equipment or road surfaces
- Up to a 50% reduction in product applied per snow event
- Fewer application trips
- Reduced need for sand and reduced dust particulate contamination

# Less Corrosiveness on Equipment



**Straight Salt**

**Type II Treated Salt**

# Stays on Target



**Straight Salt**



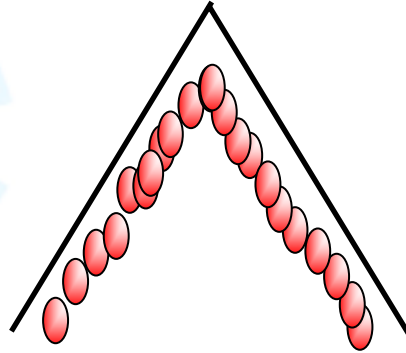
**Thawrox**

# Is This Pre-Wetting?

## Truck Bed Pre-Wet



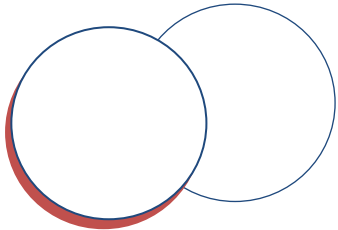
## Stockpile Injection



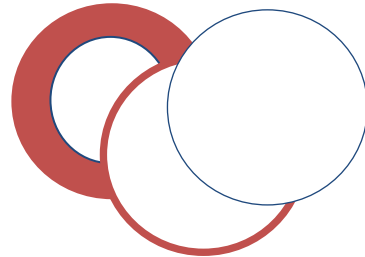
## Saddle Tank Pre-Wet



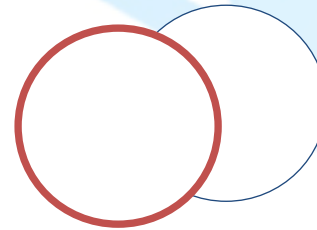
## Thawrox™



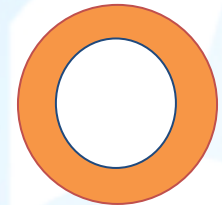
Typical coverage  
15-20%



Typical coverage  
15-35%



Typical coverage  
40-60%



Typical coverage  
95-100%

# Handling Without the Hassles

- Pre-treated for precise, evenly blended product
- No special mixing equipment required
- No hassle or expense of raw materials
- Improved handling without binding or clumping
- No leaching when stored properly



# Using with Stockpiles

- If stored properly, Thawrox treated salt...
  - Has up to 5 year shelf life
  - Will not leach out of pile
  - Will not clump or cake
  - Will keep stockpiles free-flowing at almost any temperature



# Maximize Your Budget

- Thawrox extends capital budgets and resources with:
  - 25-50% less product required
  - Fewer application trips
  - Improved residual reduces need for re-treatment
  - Reduces product, labour, fuel and equipment costs
  - Decreased corrosiveness on equipment
  - Reduces need for sand and sand cleanup

# The Bottom Line...

- Enhanced low-temperature performance and expanded melting capacity
- Less total deicer needed per snow event
- Freeflowing product in the most challenging weather conditions
- Reduced corrosiveness on equipment
- Minimized bounce, scatter and blow-off
- “Load and Go” convenience
- Maximized budget resources
- Guaranteed service and availability

For more information about making your  
operation more efficient with Thawrox®



**North American Salt  
Company**

*A Compass Minerals Company*

800-693-3334